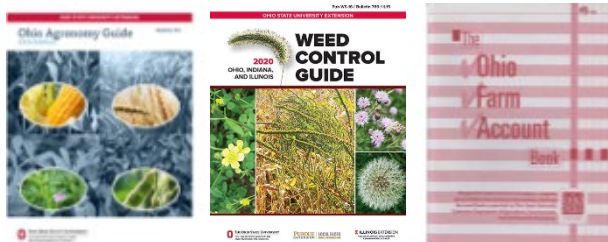


## Agriculture

- **Ohio Agronomy Guide** (15<sup>th</sup> ed.)  
\$15.75
- **Corn, Soybean, Wheat and Alfalfa Field Guide**  
\$12.50
- **Early Spring Weeds of No-Till Crop Production**  
\$9.00
- **Forage Field Guide**  
\$10.00
- **Midwest Cover Crops Field Guide**(2<sup>nd</sup> ed.)  
\$6.00
- **Pesticide Applicator Study Materials**  
*Prices for publications dependent on category(s)  
Call for details.*
- **Weed Control Guide**  
\$15.25
- **Weeds of the North Central States**  
\$17.50



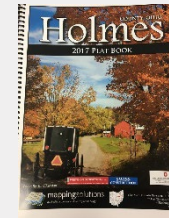
## Livestock

- **Beef Resource Handbook**  
\$20.00
- **Dairy Resource Handbook**  
\$18.75
- **Goat Resource Handbook**  
\$21.25
- **Horse Nutrition Handbook**  
\$15.00
- **Rabbit Resource Handbook**  
\$13.00
- **Sheep Resource Handbook**  
\$23.75
- **Swine Resource Handbook**  
\$19.50

## Farm Account Books

- **Ohio Farm Account Book**  
\$7.50
- **Ohio Commercial Farm Account** (spiral bound)  
\$9.50
- **Ohio Commercial Farm Account** (fillers)  
\$10.25

## Holmes County Plat Book



\$25.00  
\$28.00 (if mailed)  
**Wall Map 3'x4'**  
\$50.00

Ebooks and Smartmaps available for purchase online at:

[www.mappingsolutionsgis.com/categories/bc-drop/ohio/holmes](http://www.mappingsolutionsgis.com/categories/bc-drop/ohio/holmes)

## Pond Safety Kits

**\$60.00** (Buoy included)

**\$110.00** (replaces buoy with 19" Life Ring)

**Free delivery in Holmes County!**



*— We Sustain Life —*

Ohio State University Extension

Holmes County

75 East Clinton Street, Suite 109

Millersburg, OH 44654

Phone: 330-674-3015

[holmes.osu.edu](http://holmes.osu.edu)

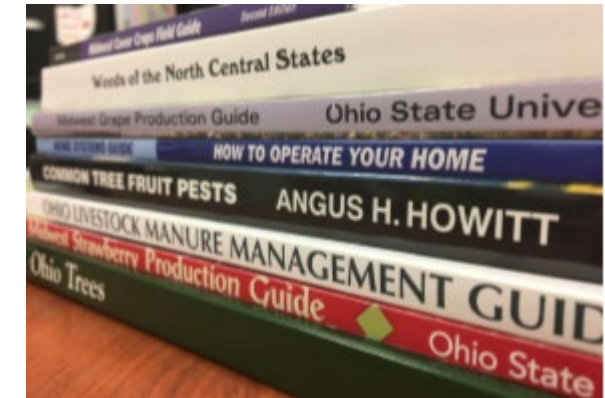
*\*Prices effective January 2020 and subject to change without notice.  
Sales tax not included.*

CFAES provides research and related educational programs to clientele on a nondiscriminatory basis. For more information, visit [cfaesdiversity.osu.edu](http://cfaesdiversity.osu.edu). For an accessible format of this publication, visit [cfaes.osu.edu/accessibility](http://cfaes.osu.edu/accessibility).

**CFAES**

OHIO STATE UNIVERSITY EXTENSION  
HOLMES COUNTY

**Publications  
Available for  
Purchase**



Agriculture  
Livestock  
Farm Accounting  
Natural Resources  
Fruit & Vegetable  
Plat Books  
Home Canning



**THE OHIO STATE UNIVERSITY**

COLLEGE OF FOOD, AGRICULTURAL,  
AND ENVIRONMENTAL SCIENCES

## To Order Publications:

Please contact the Holmes County Extension Office at 330-674-3015 to check availability of publications. If publications need to be ordered, please allow ten days.

Publications can be mailed for an additional fee. Call the office and we will calculate a total for the publications you wish to purchase and have mailed.



## OhioLine

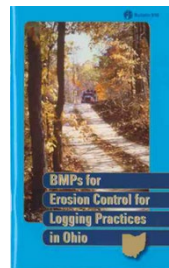
Ohio State University Extension provides numerous, free publications in electronic format. Visit [ohioline.osu.edu](http://ohioline.osu.edu) to view the entire library of OSU Extension's factsheets.

To find University and Extension research based fact sheets, simply type what you are looking for into your internet search engine and add "university extension" to the subject.

Example: "grape production university extension" Results will be research based materials on grape production. You can add Ohio State Extension if you want OSU specific publications.

## Natural Resources

- **BMP's for Erosion Control Logging**  
\$7.50
- **Ohio Trees**  
\$17.00
- **Leaf Identification Key to Eighty-Eight Ohio Trees**  
\$7.50
- **Mushrooms and Macrofungi of Ohio Handbook**  
\$20.00
- **Getting to Know Salamanders in Ohio**  
\$7.50
- **Midwestern Native Garden**  
\$20.00
- **Native Plants of Ohio**  
\$10.50
- **Ohio Christmas Tree Producers Manual**  
\$22.50



## Fruit

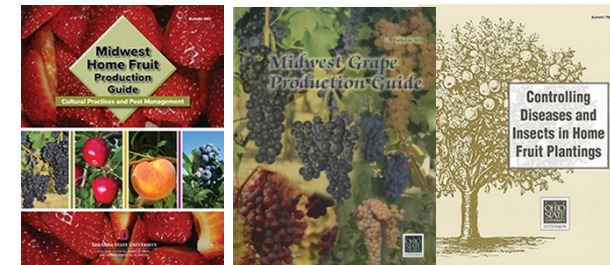
- **Brambles- Production, Management and Marketing**  
\$18.25
- **Controlling Diseases and Insects in Home Fruit Plantings**  
\$5.00
- **Diseases on Tree Fruits in the East**  
\$25.00
- **Midwest Grape Production Guide**  
\$22.50
- **Midwest Homes Fruit Production Guide**  
\$26.00
- **Midwest Small Fruit Pest Management Handbook**  
\$29.75
- **Midwest Strawberry Production Guide**  
\$17.75
- **Midwest Fruit Pest Management Guide**  
\$17.50
- **Raspberry and Blackberry Production Guide**  
\$29.75
- **Blueberry Production Guide**  
\$6.00 (printed pdf)

## Vegetables

- **Midwest Vegetable Production Guide for Commercial Growers**  
\$17.50
- **Sweet Corn Pest Identification and Management**  
\$13.00
- **USDA Complete Guide to Home Canning**  
\$20.00 (includes tax)



Canner testing is offered at \$5/unit



**PDF Versions of select publications are available for purchase through the OSU Extension Publications Store at [extensionpubs.osu.edu](http://extensionpubs.osu.edu)**