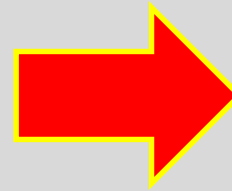


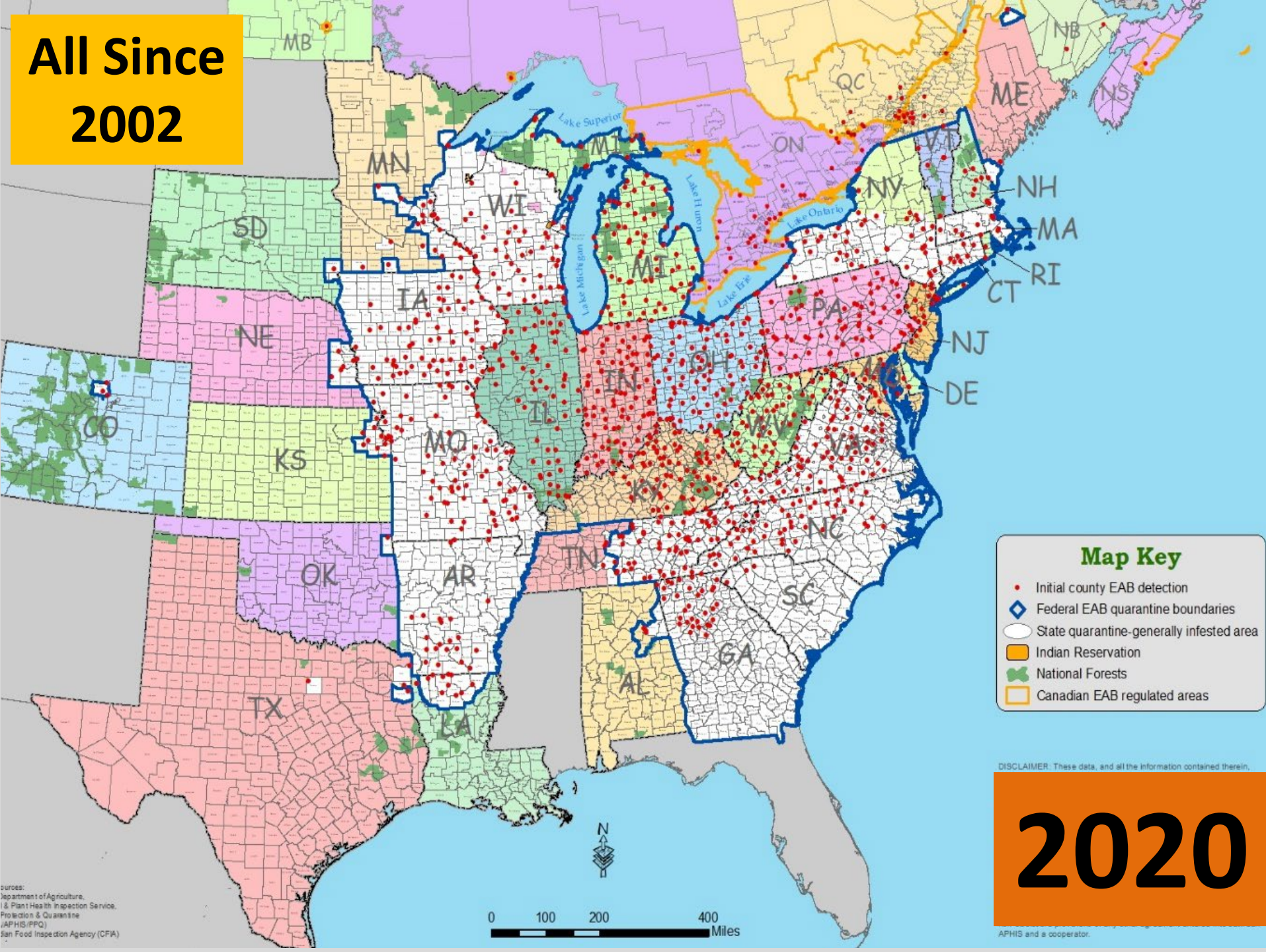
# Dangers of Standing Dead Ash

## Danger Signs

- Find the EAB or the Exit holes



**All Since  
2002**





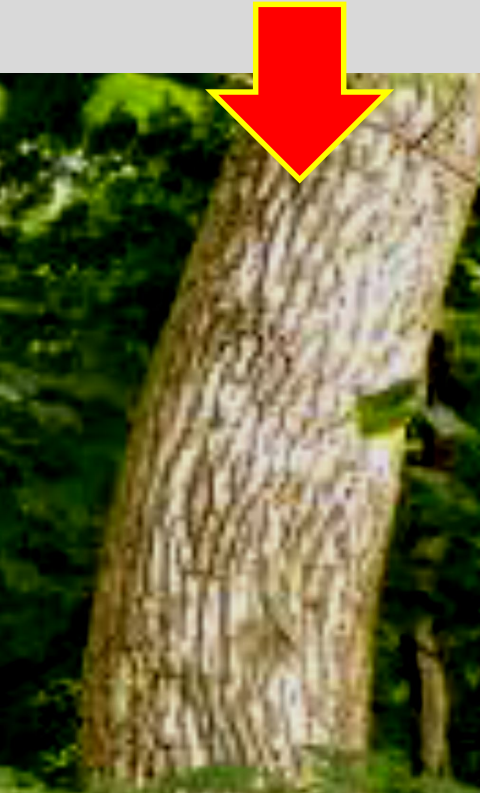
# Dangers of Standing Dead Ash

- Utility companies will no longer climb to cut Ash Trees
  - Has to be done with a bucket truck and crane
  - 8 deaths just in Ohio in last two years
    - From climbing dead Ash, from cutting dead Ash, from when dead Ash fell on their car
- *These are ones I know of*



# Danger Signs of Standing Dead Ash

Greying and  
flaking of  
bark



Wood pecker  
damage



Vertical bark splits



04/24/2012



# Dangers of Standing Dead Ash

## “Ash Snap”

- After being dead 1-2 years
- Small to no stress loads cause it
- Can happen anywhere on stem or limb



# Dangers of Standing Dead Ash

## “Ash Stem Failure”

- After being dead 1-2 years
- Often under no loads



Typically on larger trees and about 24” above the grade line



# Dangers of Standing Dead Ash

## “Ash Root Failure”

- Catastrophic and common
- Often under no loads





# Dangers of Standing Dead Ash

## “Barber Chairing”

- Unanticipated problem
- Happens when cutting down tree
- Has killed experienced workers





# Barber Chairing



# Death From Cutting Wood

- Professional Logging -most dangerous job in America
- Fatality rate among professional loggers is 132.7 per 100,000 workers
  - 30 times higher than all other workers
    - 3.4 per 100,000 (*Source: Beyond the Numbers- U.S. Bureau of Labor*)
    - **2018 in US - 97 DIED from logging**
    - **2016-17 in OH – 11 DIED within the natural resource industry** (*includes logging*)
- You and I might know a thing or two about felling trees but...

**We are not professionals**



# Must Do's Around Ash

- **Never cut in the woods alone “Especially Ash”**
- Hire professionals to cull the Ash
  - Have proof of “Bonded for insurance”
    - At minimum make them sign a waver with a **no fault clause** against you
- If dead more than one year they are a **DANGER**
- If dead more than two years they are an **EXTREME DANGER**

# Dangers of Standing Dead Ash

## Are Real

- Working in sugarbush
  - Injuring you or workers
  - Pulling down tubing lines
  - Pulling down maples
- Do others access your woods?
  - Hiking, Hunting,
  - Fishing along creeks
  - Cross country skiing, etc.
  - Driveways & Roadways

